

# Maintenance Therapy For Multiple Myeloma

If you have recently been diagnosed with multiple myeloma, the aim of your initial treatment will be focused on getting the myeloma under control. The type of treatment your doctor offers you will depend on several factors, including your general health. Your doctor will explain the different treatment options available and their side effects. Your doctor can also talk to you about things to consider when making treatment decisions.

Some people might have intensive treatment which often includes a bone marrow transplant. If your doctor thinks this treatment is suitable for you, they will talk with you about this. Following the initial intensive treatment, your doctor may decide to continue your treatment for as long as it controls the myeloma. This is called continuous or maintenance treatment.

### About clinical studies

A clinical study is a type of research that tests an investigational drug (also called a “study drug”) to see how it might act in the body and affect a specific condition. “Investigational” means that the drug is still being studied and that research doctors are trying to find out more about it. A drug must be tested in multiple phases of clinical studies before it may be used for patients in the public. Clinical studies play an important role in developing new medicines and treatments for people with cancer.

Even before a study starts, safety is the highest priority. Every study must be reviewed and monitored by an Institutional Review Board (IRB) and/or an Independent Ethics Committee. These groups (made up of both scientists and non-scientists) review the study’s plan to make sure:

- The rights of participants will be protected
- There are no unnecessary risks involved
- The study answers important unanswered medical questions

*If you’re interested in participating in a clinical study, talk to your doctor. Together, you can decide whether a clinical study may be right for you.*

To learn more about multiple myeloma clinical studies, visit:  
**[BMSStudyConnect.com](https://www.bmsstudyconnect.com)**



Talk to your doctor at any time if you have questions about clinical studies, including this study.

## Notes/Questions

**Study number: IM048022**

To learn more about multiple myeloma clinical studies, visit: **[BMSStudyConnect.com](https://www.bmsstudyconnect.com)**

STUDY CONNECT  
[BMSStudyConnect.com](https://www.bmsstudyconnect.com)

Thank you  
for considering a clinical study.



# Have you been diagnosed with multiple myeloma?



The **EXCALIBER Maintenance** clinical study is now enrolling participants who received either a recommendation to be treated with or a recommendation for an initial therapy that includes bone marrow transplant.

| Ask your doctor for more information about this clinical study.

**Study number: IM048022**  
**Version: Approved v1.0**

Multiple myeloma

# About the EXCALIBER Maintenance clinical study



## Study purpose

This study is comparing an investigational drug called Iberdomide to an approved maintenance drug called Lenalidomide in adults with newly diagnosed multiple myeloma following intensive treatment including bone marrow transplant. The key goal of the study is to:

- Compare efficacy (how well it works) and safety of Iberdomide to the approved maintenance drug called Lenalidomide

## Study design

This is a global study that aims to enroll more than 1,200 participants worldwide. The study has two stages. If you qualify for the study, you will participate in only one of these stages. In both stages, a computer program will assign you to a study treatment group at random (by chance), as follows:

- If you are in Stage 1, you will be assigned to receive either Iberdomide at one of three dose levels or Lenalidomide.
- If you are in Stage 2, you will be assigned to receive either Iberdomide at the dose level selected in Stage 1 or Lenalidomide.

All participants in the study will receive active study treatment with either Iberdomide or Lenalidomide.

## Study periods

The study is divided into three periods as briefly described below. The time you will stay in the study depends on how you respond to study treatment.

1. Screening period (informed consent process\* followed by screening tests and procedures to find out if you qualify to participate in the study)
2. Study treatment period (Iberdomide taken by mouth once a day for the first 21 days of each 28-day cycle or Lenalidomide taken by mouth once a day)
3. Follow-up period (minimal assessments after study treatment has concluded, 28 days after you stop study treatment and then every 4 weeks or every 4 months)

*\* During the informed consent process, the study will be explained to you. You will be able to ask any questions you may have about the study. If you want to take part in the study, you will need to sign the informed consent form before any screening tests begin. If you are a woman who can become pregnant, or a male, you will be counseled on the pregnancy risks and pregnancy prevention requirements prior to the start of study treatment.*



## How do I qualify for this study?

You may qualify to participate in this study if you:

- Are at least 18 years of age
- Have been diagnosed with multiple myeloma and either recommended for, or started treatment with intensive treatment including bone marrow transplant
- Achieve at least a partial response after bone marrow transplant

*If you have questions about any of the requirements listed here, please talk to your doctor. The study doctor will also check additional eligibility requirements.*



## Will I have to pay for this study?

If you qualify and choose to participate in this study, you will NOT be charged for:

- Study treatment
- Study doctor visits
- Laboratory work, tests, and procedures that are needed for the study

You may also be eligible for reimbursement of some costs, such as travel or transportation, depending on your location. Study staff can provide more details about costs and reimbursement for this study.

## What are the potential benefits and risks?

You will have frequent visits with the study doctor to assess your cancer and your overall health. This study will also assess how you feel about the study treatment and your quality of life as it relates to your health.

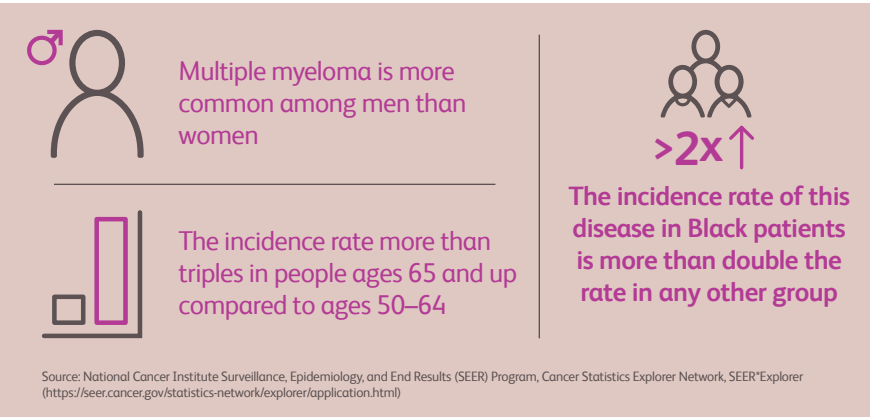
However, the outcomes in a clinical study are not known in advance. Your health may improve, stay the same, or get worse. It's also possible that you may experience side effects related to the study treatment or study procedures. The study doctor will closely monitor you for any possible side effects.

Your participation in this study is completely voluntary. Even if you decide to take part in it now, you are free to partially or completely end your participation in the study, and withdraw your consent, at any time. An example of partially ending your participation would be to stop receiving the study treatment, but to still participate in the follow-up period.



# The benefits of patient diversity in clinical studies

People of different ethnicities, ages, and genders may respond differently to the same medical therapy. To make sure potential new medicines are effective in people of all backgrounds and ages, we need clinical studies to include a diverse group of patients, who represent the people with the condition.



The reasons for the differences are complex but are mostly due to differences in risk factors and in health care access.

Ensuring people from diverse backgrounds join clinical studies is key to advancing health equity. However, people from racial and ethnic minorities and other diverse groups are underrepresented in clinical research.

Given the increased prevalence of multiple myeloma in Black patients, it is particularly important that they are actively represented within these clinical studies.

*Bristol Myers Squibb is committed to improving inclusion of diverse patients in our clinical studies so that participation is more reflective of the real-world population.*

Thank you for taking a few moments to learn about the EXCALIBER Maintenance study.

To learn more about multiple myeloma clinical studies, visit:  
**BMSStudyConnect.com**