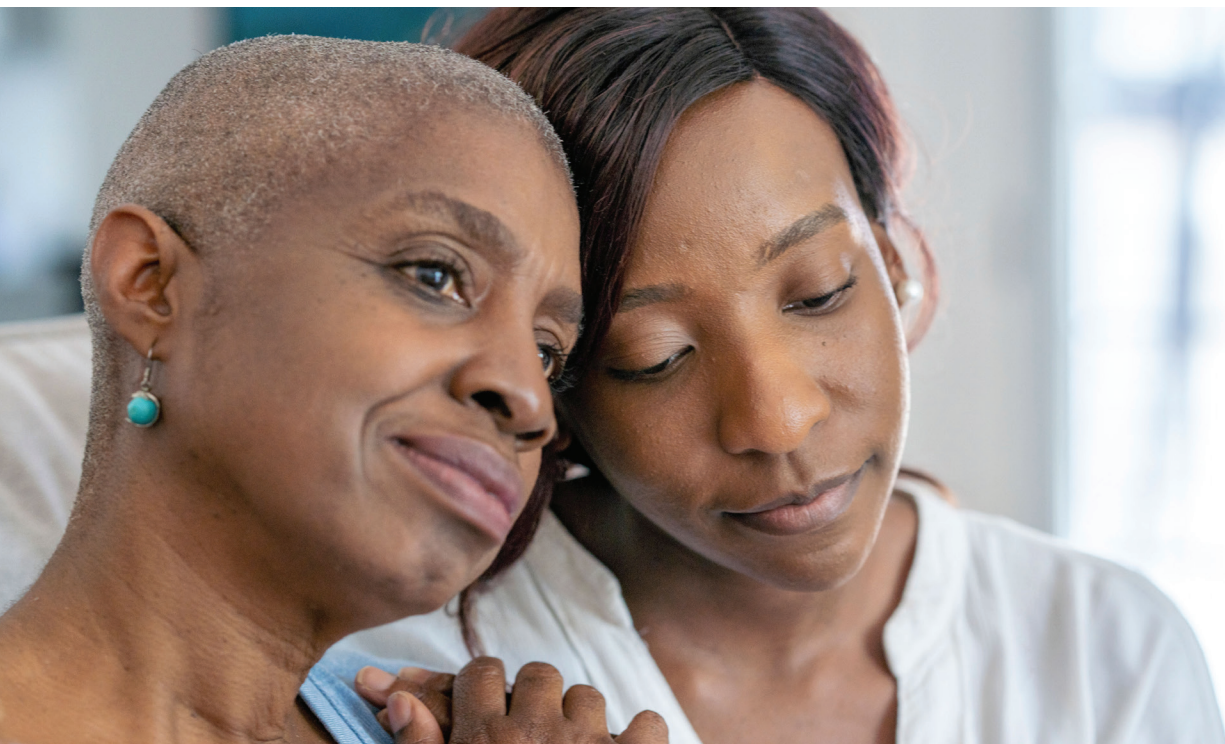




# Have you been diagnosed with multiple myeloma?



If you have recently been diagnosed with multiple myeloma, the aim of your initial treatment will be focused on getting the myeloma under control. The type of treatment your doctor offers you will depend on several factors, including your general health. Your doctor will explain the different treatment options available and their side effects. Your doctor can also talk to you about things to consider when making treatment decisions.

Some people might have intensive treatment which often includes a bone marrow transplant. If your doctor thinks this treatment is suitable for you, they will talk with you about this. Following the initial intensive treatment, your doctor may decide to continue your treatment for as long as it controls the myeloma. This is called continuous or maintenance treatment.

**EXCALIBER Maintenance** is a clinical study comparing an investigational drug called Iberdomide already studied in other trials, including patients with relapsed refractory multiple myeloma to an approved maintenance drug called Lenalidomide in adults with newly diagnosed multiple myeloma following intensive treatment including bone marrow transplant.

If you qualify and choose to participate, you will receive study treatment with either Iberdomide or Lenalidomide (oral treatment). The study doctor will assess your cancer and your overall health at frequent visits. This study will also assess how you feel about the study treatment and your quality of life as it relates to your health.

## The key goal of the study is to:

- Compare efficacy (how well it works) and safety of Iberdomide to the approved maintenance drug called Lenalidomide.

## You may qualify to participate in this study if you:

- Are at least 18 years of age
- Have been diagnosed with multiple myeloma and either received a recommendation for or started treatment with intensive treatment including bone marrow transplant
- Achieve at least a partial response after bone marrow transplant

*The study doctor will also check additional eligibility requirements.*

Further research will help to develop new treatments which may be more effective or better tolerated so people can continue taking them for longer.

**If you have questions about this clinical study, please talk to your doctor or contact:**